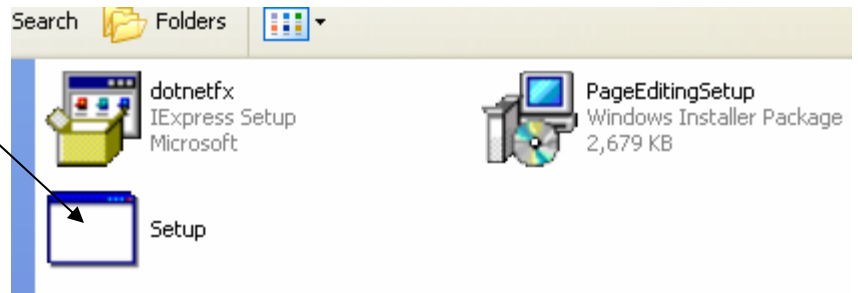
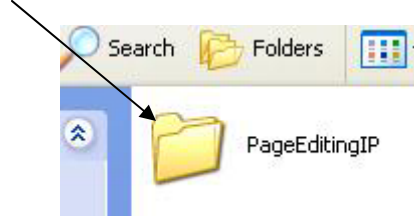


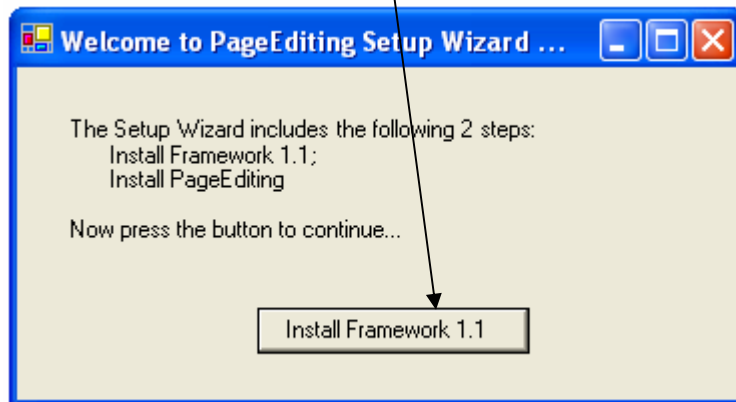
5.0 GC-110 Remote Access Software Installation Instructions (IP)

1. Place CD in PC that is hosting this application. Either find it via “My Computer” or browse to it via Windows Explorer”.
2. Once opened , this folder should be visible:
3. Double-click (open) this folder to yield the following files:

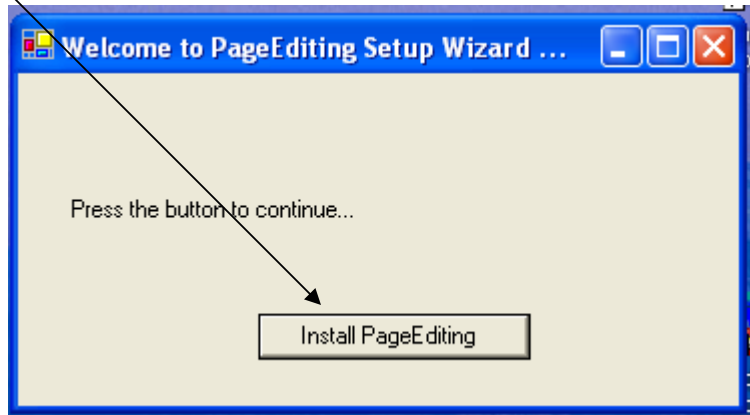
Double-click (open)
this ICON “Setup”



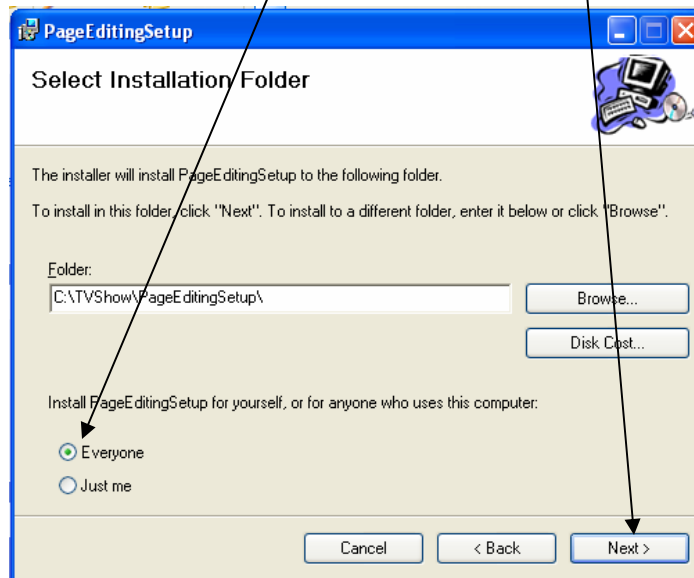
4. Click on the “Install Framework 1.1 “function bar... and answer “Yes” to the next Prompt.



5. Once Framework is installed , the next menu is:
Click on the function bar

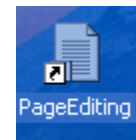


6. A Windows Installer menu will appear – choose “Next” and you will be at the following menu, select “everyone”, then click on next; the program will install.



Once you have click “next “ a few times the program will indicate that the program has successfully installed,. At this point close all menus and remove CD.

An icon has been installed in your desktop
This is your shortcut to the GC-110 Remote Editor.



Double click to expand the Remote Editor, click on
The “Communication” task header then “New Remote Location” to set IP.
Additional instructions for IP access are in the manual. (pg 34-37).